



V

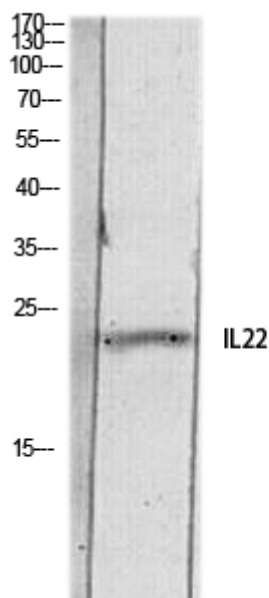
IL-22 Polyclonal Antibody

Catalog No	YP-Ab-16075
Isotype	IgG
Reactivity	Human;Mouse;Rat
Applications	WB;ELISA
Gene Name	IL22
Protein Name	Interleukin-22
Immunogen	The antiserum was produced against synthesized peptide derived from the C-terminal region of human IL22. AA range:121-170
Specificity	IL-22 Polyclonal Antibody detects endogenous levels of IL-22 protein.
Formulation	Liquid in PBS containing 50% glycerol, 0.5% BSA and 0.02% sodium azide.
Source	Polyclonal, Rabbit,IgG
Purification	The antibody was affinity-purified from rabbit antiserum by affinity-chromatography using epitope-specific immunogen.
Dilution	Western Blot: 1/500 - 1/2000. ELISA: 1/10000. Not yet tested in other applications.
Concentration	1 mg/ml
Purity	≥90%
Storage Stability	-20°C/1 year
Synonyms	IL22; ILTIF; ZCYTO18; Interleukin-22; IL-22; Cytokine Zcyto18; IL-10-related T-cell-derived-inducible factor; IL-TIF
Observed Band	22kD
Cell Pathway	Secreted.
Tissue Specificity	Blood,PCR rescued clones,
Function	function:Cytokine that contributes to the inflammatory response in vivo.,similarity:Belongs to the IL-10 family.,
Background	function:Cytokine that contributes to the inflammatory response in vivo.,similarity:Belongs to the IL-10 family.,
matters needing attention	Avoid repeated freezing and thawing!
Usage suggestions	This product can be used in immunological reaction related experiments. For more information, please consult technical personnel.



Products Images

MOUSE-KIDNEY



Western blot analysis of MOUSE-KIDNEY lysis using IL22 antibody. Antibody was diluted at 1:500. Secondary antibody(catalog#:RS0002) was diluted at 1:20000